

GONG MALLETS

price and specification



CLASSIC MALLETS Medium series (long version)

SIZE	LENGHT (cm)	WEIGHT (grams)	DIAMETER (cm)	HANDLE (mm)	HARDNESS	PRICE - € / PLN
CM-S	34	160	7	20	MEDIUM	35 / 140
CM-M	37	260	8	20	MEDIUM	38 / 155
CM-L	38	310	9	20	MEDIUM	41 / 165
CM-XL	40	370	10	20	MEDIUM	43 / 175
CM-XXL	39	450	10,5	25	MEDIUM / LIGHT HARD	62 / 250
BMM-550	42	550	12	25	MEDIUM	88 / 360

CLASSIC MALLETS Semi-Soft series (long version)

SIZE	LENGHT (cm)	WEIGHT (grams)	DIAMETER (cm)	HANDLE (mm)	HARDNESS	PRICE - € / PLN
CSS-M	37	260	8,5	20	SEMI SOFT	38 / 155
CSS-L	38	310	9,5	20	SEMI SOFT	41 / 165
CSS-XL	40	370	10,5	20	SEMI SOFT	43 / 175
CSS-XXL	39	450	11	25	SEMI SOFT	62 / 250



CLASSIC MALLETS (short version)

SIZE	LENGHT (cm)	WEIGHT (grams)	DIAMETER (cm)	HANDLE (mm)	HARDNESS	PRICE - € / PLN
CM-S-M	30	230	8 - 8,5	20	MEDIUM / S.SOFT	37 / 150
CM-S-L	31	290	9 - 9,5	20	MEDIUM / S.SOFT	40 / 160
CM-S-XL	32	340	10 - 10,5	20	MEDIUM / S.SOFT	42 / 170

All CLASSIC mallets have a string pendant



FLAT series (FS-M) & (DS-M)

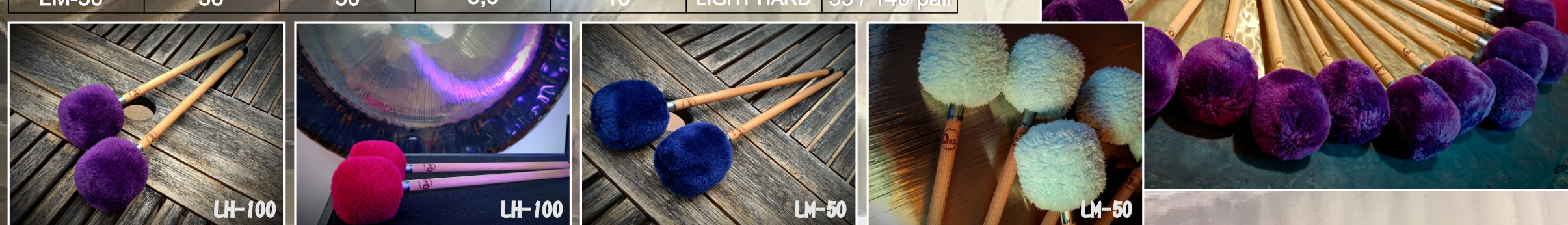
LENGHT (cm)	WEIGHT (grams)	DIAMETER (cm)	HANDLE (mm)	HARDNESS	PRICE - € / PLN
36 (FS-M)	160	8,5	16	LIGHT HARD	35 / 140
34 (DS-M)	230	11	20	MEDIUM	38 / 155

My mallets have a multi-layer structure, maximally eliminating unwanted sounds when in contact with the gong's surface. Their weight, length and hardness ensure optimal transfer of kinetic energy and comfort during play.



LH-100 & LM-50 series

TYPE	LENGHT (cm)	WEIGHT (grams)	DIAMETER (cm)	HANDLE (mm)	HARDNESS	PRICE - € / PLN
LH-100	37	100	6,5	12	HARD	44 / 180 pair
LM-50	36	50	5,0	10	LIGHT HARD	35 / 140 pair



FLUMI (silicone) - set 6 pcs. PRICE 99 € / 400 PLN

- #1 - 1,0 cm
- #2 - 2,0 cm
- #3 - 2,5 cm
- #4 - 3,5 cm
- #5 - 4,0 cm
- #6 - 5,5 cm

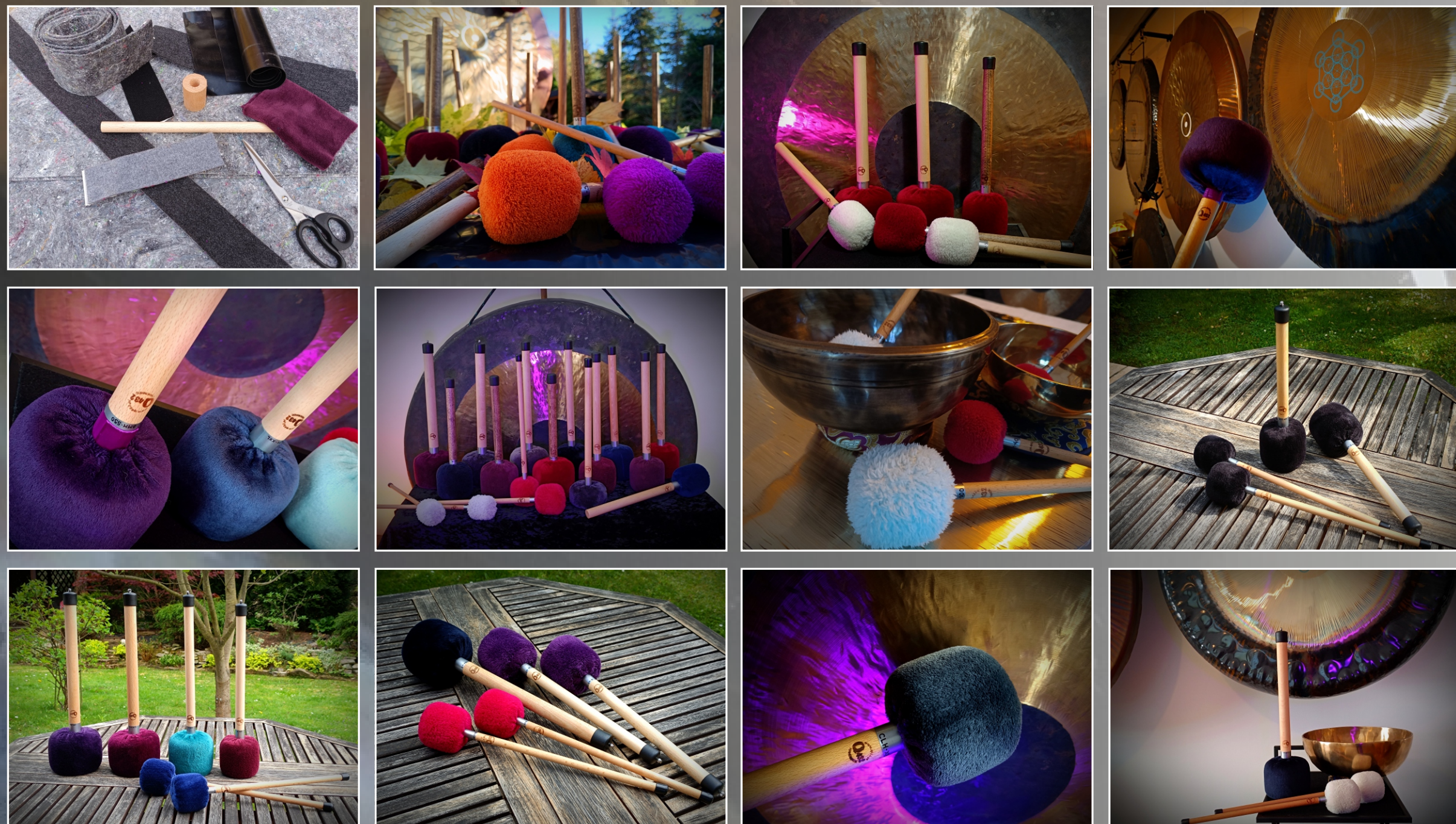


FLUMI (silicone) - set 2 pcs. PRICE 49 € / 200 PLN

- #1 - 4,0 cm (blue)
- #2 - 5,5 cm (blue)



GALLERY



We make mallets to order according to your preferences: length, weight, hardness, diameter, color. Do you have any questions? Text me: kontakt@q432.pl

